

# 3718 WEST END UNIT 2

## ELECTRICAL PLAN 2.19.24

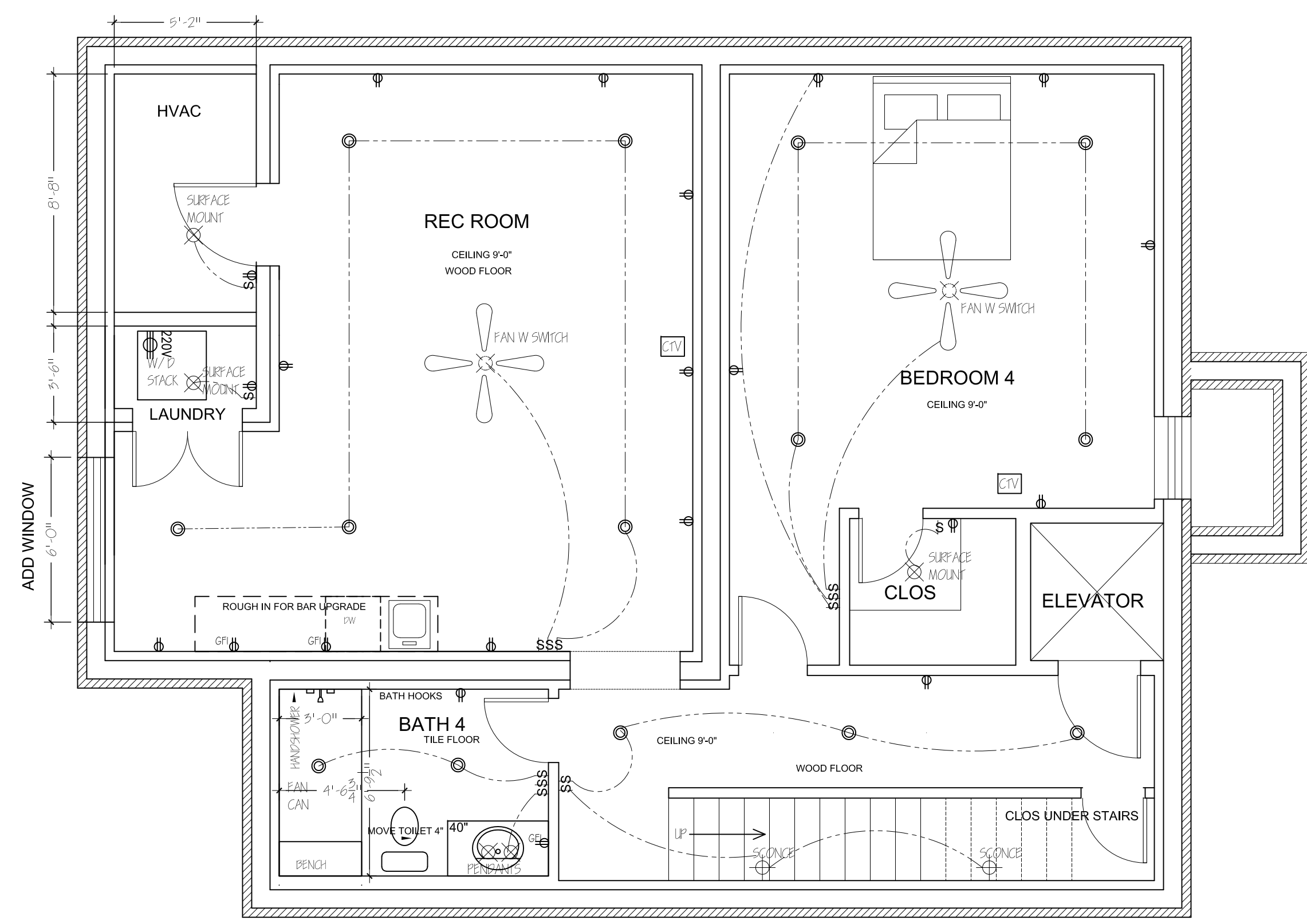
SCALE 1/4" = 1'-0" (24x36 SHEET)

LIGHTING LEGEND		POWER LEGEND	
⊗	SURFACE MOUNT	⊕	DUPLEX OUTLET
⊕	WALL MOUNT	⊕	GFI DUPLEX OUTLET
⊗	HANGING FIXTURES	⊕	220 V OUTLET
⊕	STANDARD SWITCH	⊕	OUTLET IN FLOOR
⊕	FAN CAN	⊕	EXTERIOR WATERPROOF OUTLET
⊕	5" LED CAN LIGHT	⊕	CABLE TELEVISION OUTLET
		⊕	SMOKE DETECTOR

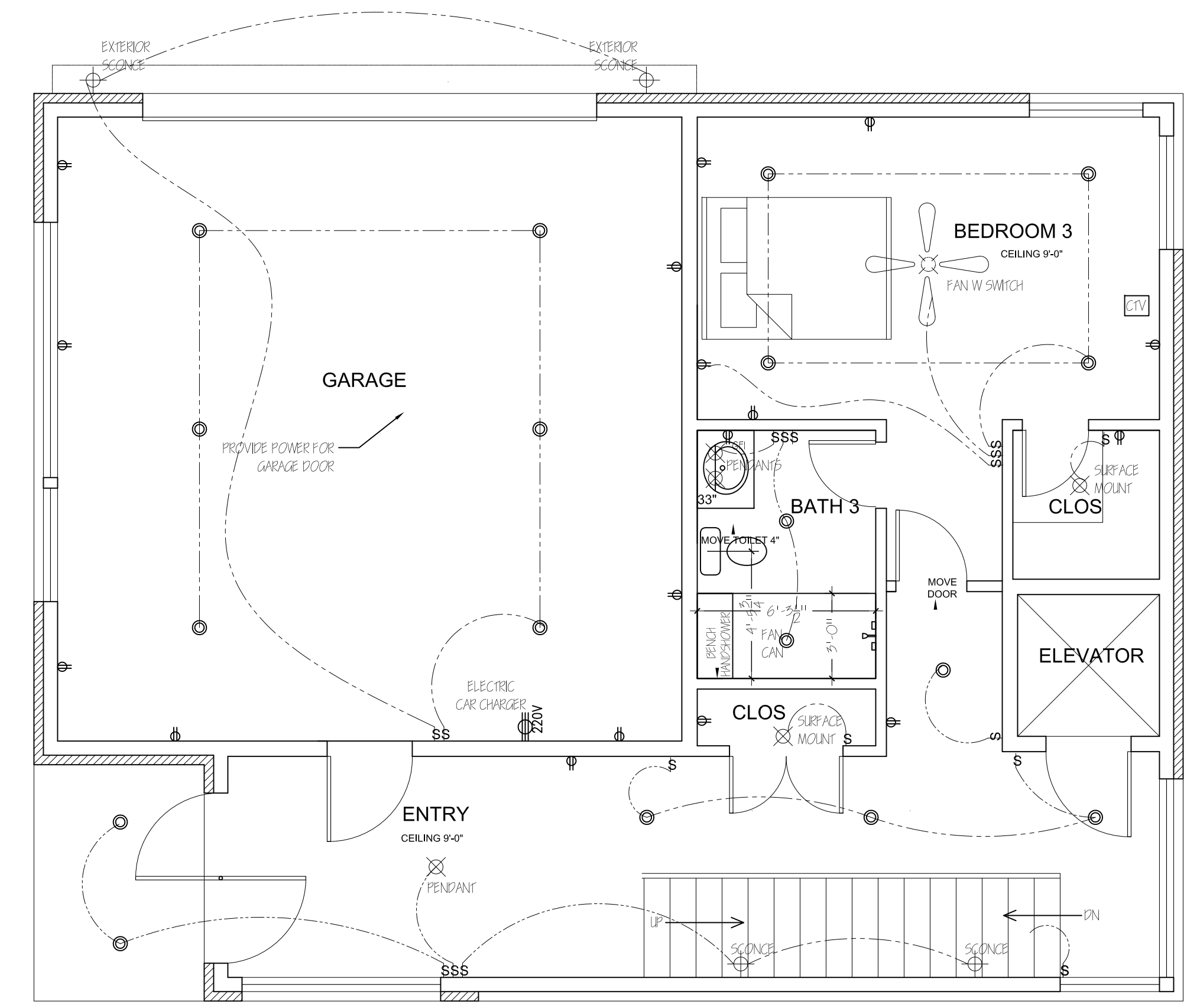
PROVIDE POWER HOOKUPS FOR ALL APPLIANCES INCLUDING BUT NOT LIMITED TO DISHWASHER, DISPOSER, REFRIGERATOR, STOVE, OVEN RANGE HOOD, HOT WATER HEATER, FURNACE, OVERHEAD GARAGE DOORS, ETC. SEE MANUFACTURERS INSTALLATION INSTRUCTIONS FOR POWER REQUIREMENTS.

WATER HEATER AND FURNACE TO BE LOCATED BY MECHANICAL CONTRACTOR AND PLUMBER IN FIELD.

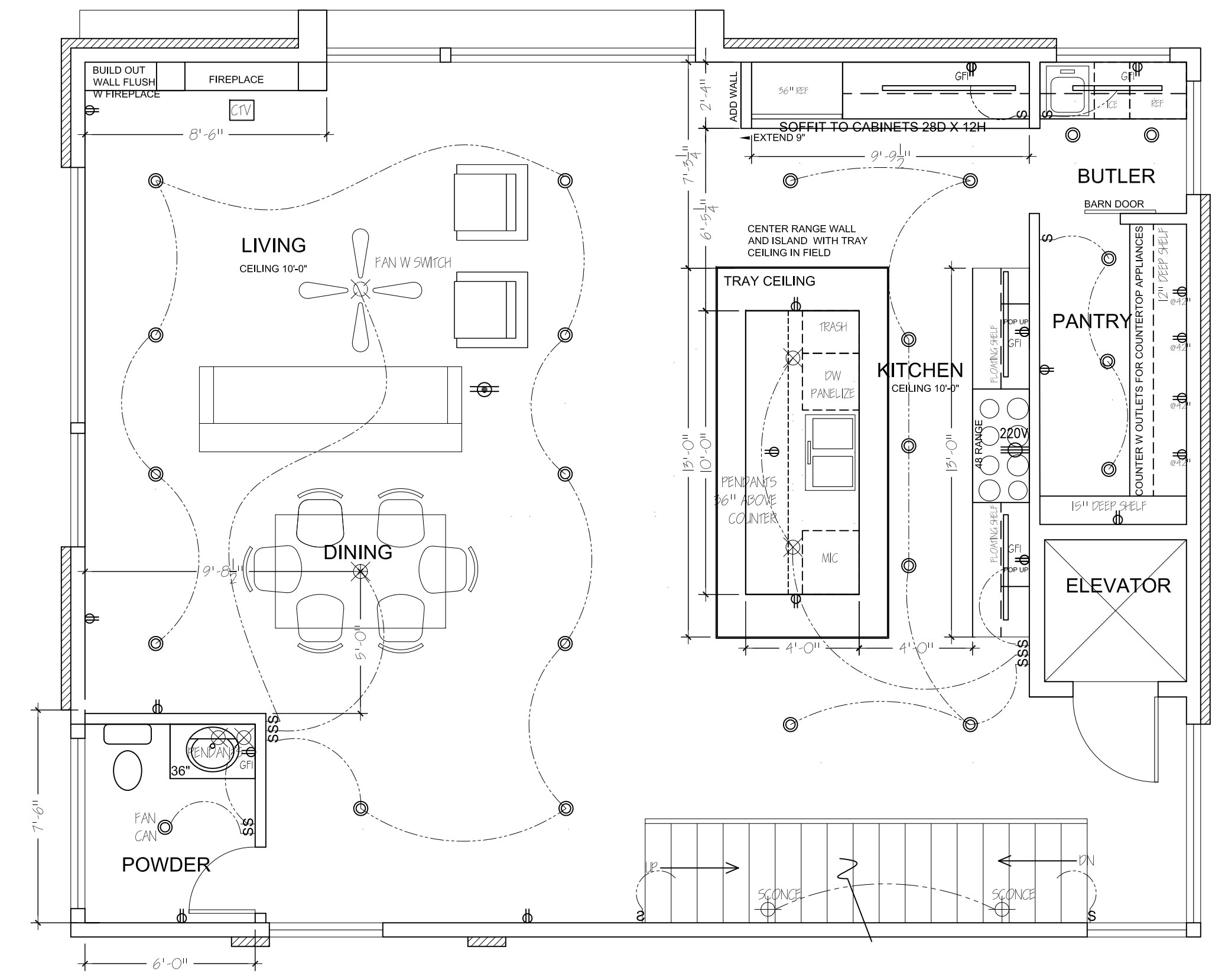
NOTE: ALL RECEPTACLES ARE TO BE PLACED AT STANDARD HEIGHT UNLESS OTHERWISE NOTED.



BASEMENT



FIRST FLOOR



2ND FLOOR

# 3718 WEST END UNIT 2

## ELECTRICAL PLAN 2.19.24

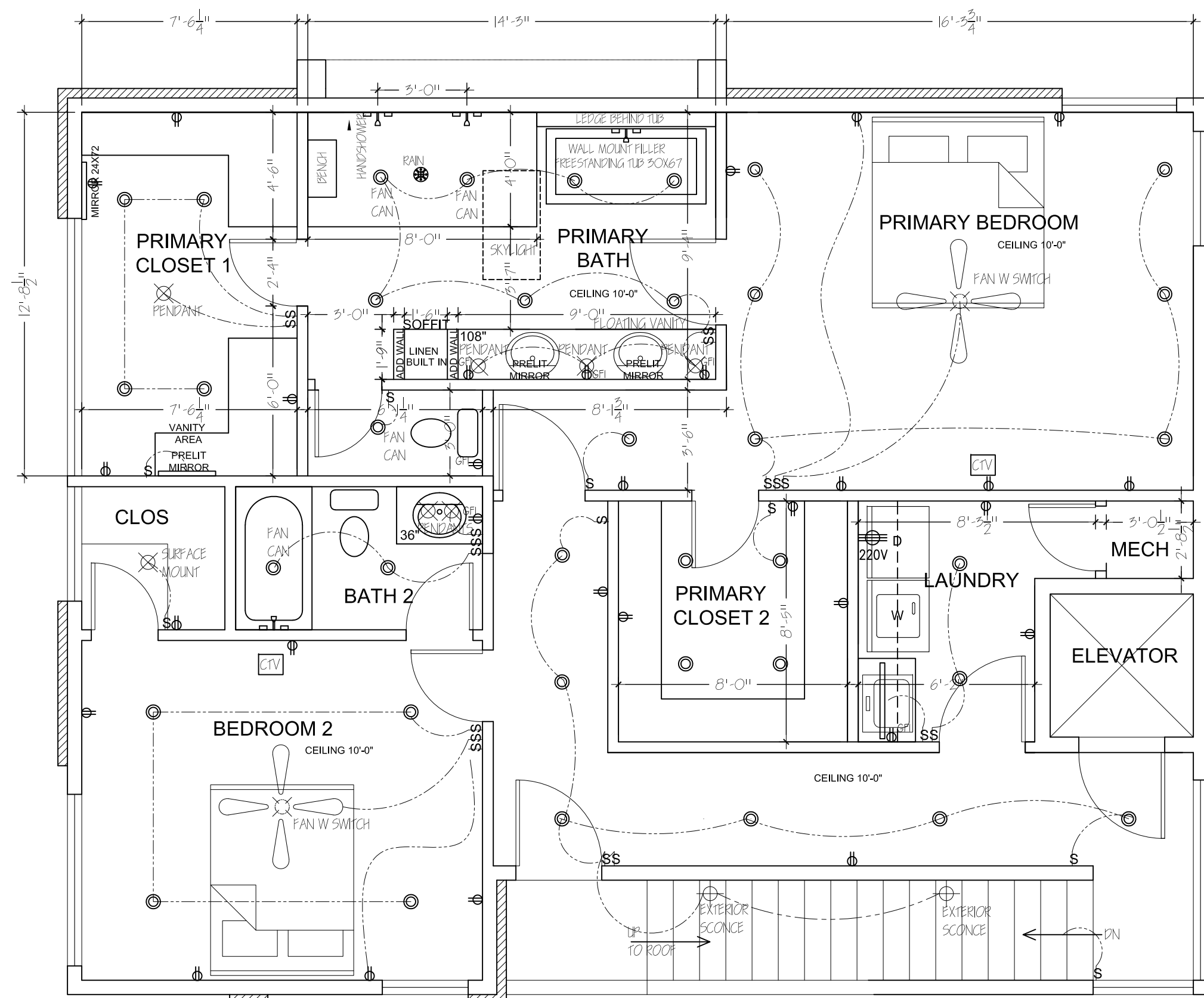
SCALE 1/4" = 1'-0" (24x36 SHEET)

LIGHTING LEGEND		POWER LEGEND	
⊗	SURFACE MOUNT	⊕	DUPLEX OUTLET
⊕	WALL MOUNT	⊕	GFI DUPLEX OUTLET
⊗	HANGING FIXTURES	⊕	220 V OUTLET
⊕	STANDARD SWITCH	⊕	OUTLET IN FLOOR
⊕	FAN CAN	⊕	EXTERIOR WATERPROOF OUTLET
⊕	5" LED CAN LIGHT	⊕	CABLE TELEVISION OUTLET
		⊕	SMOKE DETECTOR

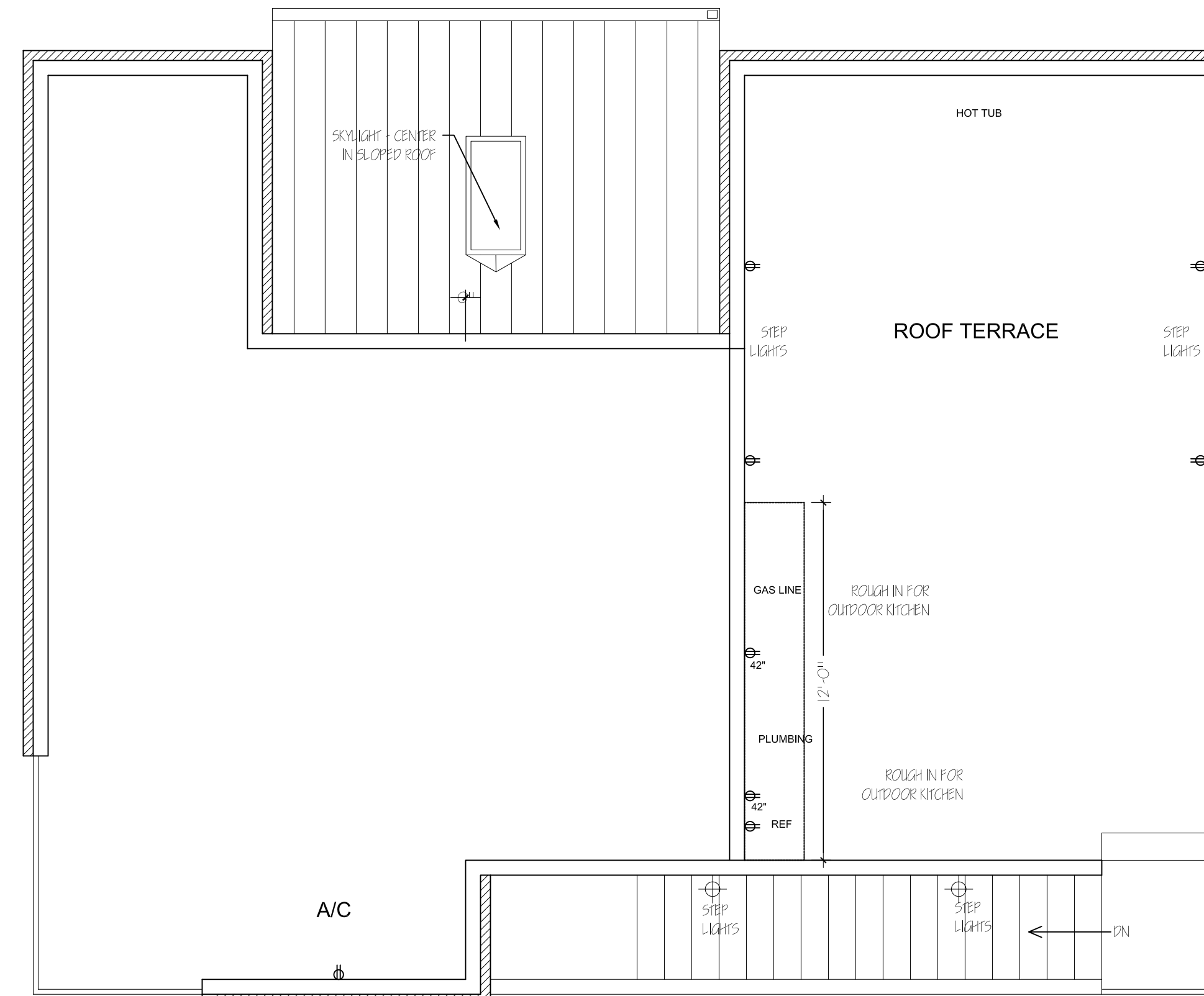
PROVIDE POWER HOOKUPS FOR ALL APPLIANCES INCLUDING BUT NOT LIMITED TO DISHWASHER, DISPOSER, REFRIGERATOR, STOVE, OVEN RANGE HOOD, HOT WATER HEATER, FURNACE, OVERHEAD GARAGE DOORS, ETC. SEE MANUFACTURERS INSTALLATION INSTRUCTIONS FOR POWER REQUIREMENTS.

WATER HEATER AND FURNACE TO BE LOCATED BY MECHANICAL CONTRACTOR AND PLUMBER IN FIELD.

NOTE: ALL RECEPTACLES ARE TO BE PLACED AT STANDARD HEIGHT UNLESS OTHERWISE NOTED.



3RD FLOOR



ROOFTOP